

NEMA Type 4X

Single Door Clamped Cover Enclosures for Flange Mounted Disconnects

DN4X Series Stainless Steel Disconnect Enclosures

Standard Features

- Continuous hinge (removable hinge pin)
- Wall mounting feet
- Watertight urethane gasket
- Stainless steel clamps and screws
- 3/8" collar studs for optional mounting panel (mounting panels sold separately)
- Grounding studs on inside of box and cover
- Flange cut out for disconnect handle (handle not included)

Design Options

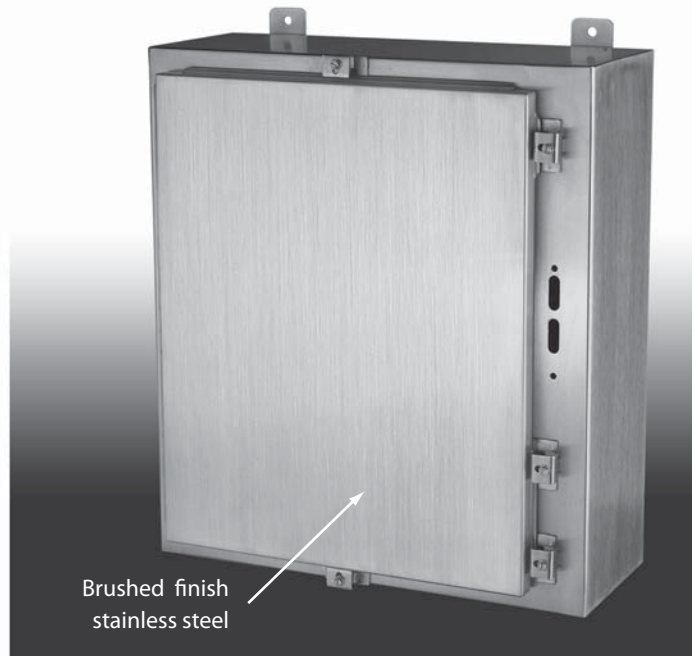
- Painted steel and stainless steel mounting panels
- Laser cut entries or cut-outs
- Terminal blocks or other component assembly
- Print Pockets
- Swing panel / dead front panel
- Padlock provisions
- Quick release latches
- Custom sizes
- 12 gauge material thickness
- Drip shields and sun shields
- Special Mounting Provisions

Material

- 14 and 16 Gauge / Type 304 or 316L stainless steel
- Stainless steel hardware
- #3 or #4 brushed finish

Certifications

- NEMA Type 3, 3R, 4, 4X, 12, and 13
- UL50
- cULus Listed



DESIGNED TO HOUSE THE FOLLOWING:

Allen - Bradley Bulletin 1494V disconnect switches with flange mounted variable depth operating mechanisms and Bulletin 1494V flange mounted variable depth operating mechanisms for circuit breakers.

PLEASE NOTE: Allen Bradley Bulletin 1494V-RI, -R2 and -W2 operating handles and

Allen Bradley Bulletin 1494F disconnect devices or Bulletin 1494D circuit break operators will not fit.

ABB Controls Flange mounted variable depth operating mechanisms for disconnect switches and circuit breakers

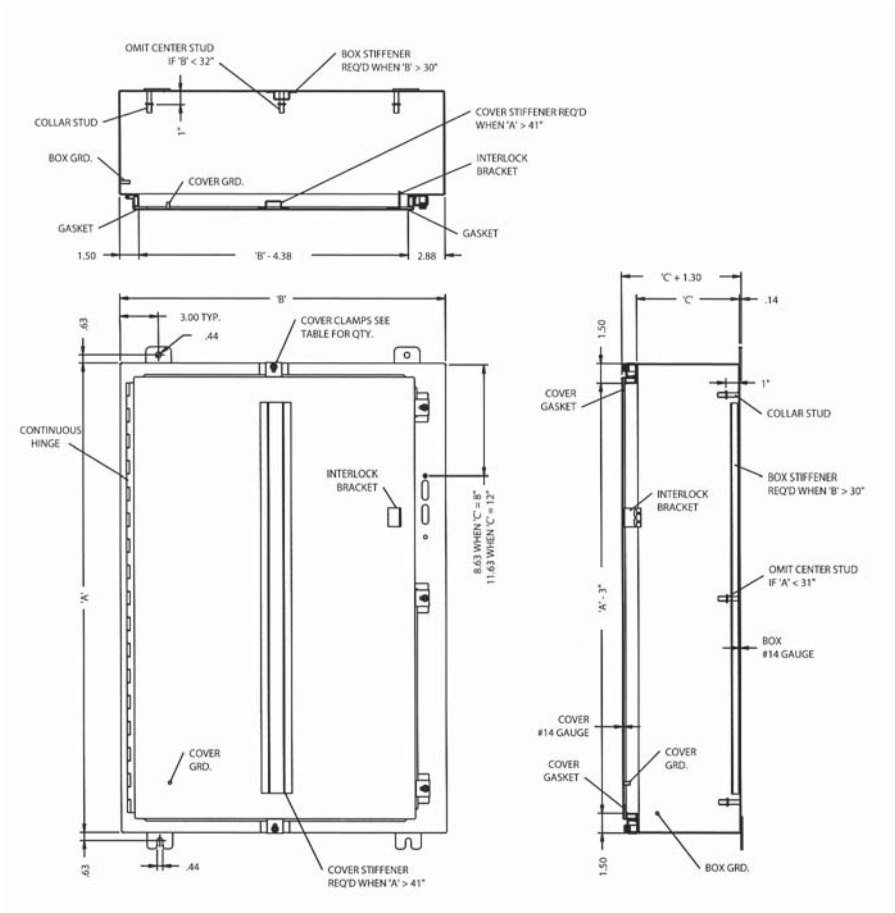
Cutler Hammer/ Westinghouse Type C361 flange mounted variable depth operating mechanisms with disconnect switches and Type C371 flange mounted variable depth operating mechanisms for circuit breakers. Flex Shaft™ operating handles for circuit breakers.

General Electric Type STDA flange handles and variable depth operating mechanisms for disconnect switches and circuit breakers. Also Spectra Flex™ cable operators for circuit breakers

Siemens (I-T-E) Max Flex™ flange mounted variable depth operating handles for circuit breakers.

Square D Class 9422 disconnect switches with flange mounted variable depth operating mechanisms or cable mechanisms and Class 9422 flange mounted variable depth operating mechanisms for circuit breakers.

NEMA Type 4X



STAINLESS STEEL 304 or 316L

ENCLOSURE				MOUNTING PANEL			
Cat #	Box Dimensions			Clamps	Cat #	Dimensions	
DN4X (304) or DN4X6 (316L)	A	B	C	#		Height	Width
-242108	24.00	21.38	8.00	5	V2420	21.00	17.00
-242508	24.00	25.38	8.00	5	V2424	21.00	21.00
-302508	30.00	25.38	8.00	5	V3024	27.00	21.00
-362508	36.00	25.38	8.00	5	V3624	33.00	21.00
-363108	36.00	31.38	8.00	7	V3630	33.00	27.00
-423112	42.00	31.38	12.00	10	V4230	39.00	27.00
-423712	42.00	37.38	12.00	10	V4236	39.00	33.00
-483712	48.00	37.38	12.00	10	V4836	45.00	33.00
-603712	60.00	37.38	12.00	11	V6036	57.00	33.00