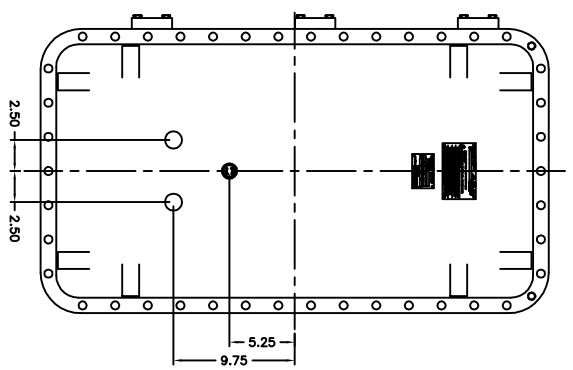
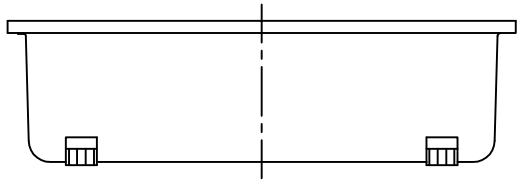
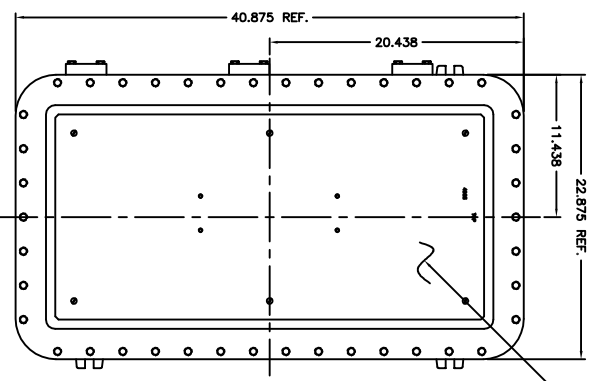
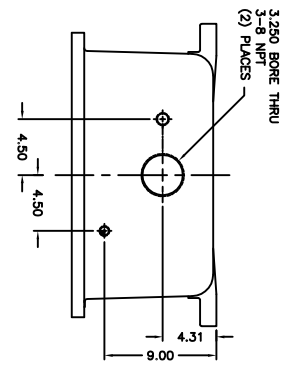
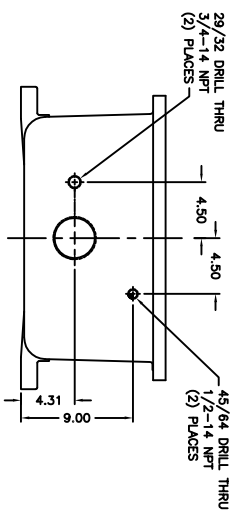


UNCONTROLLED DRAWING
 (DATA SUBJECT TO CHANGE WITHOUT NOTICE)
 FOR ADDITIONAL HELP CONTACT ENGINEERING@ADALET.COM



INSTALL XHF-3 HINGES



NOTES:

1. MAKE BOX FROM PART #2979-3HRW.
2. REFERENCE DWG. #4986-1 FOR STANDARD MACHINING.
3. MAKE COVER FROM PART #2993-3HRW.
4. REFERENCE DWG. #4986-2G FOR STANDARD MACHINING.
5. PROBE OPENING & BACKWALL FOR PROGRAM ZERO (CENTERLINE).

XMSQ N4

		MODIFIED XMSQ N4 ENCLOSURE FOR	
DATE: 12-17-05 TIME: 1-5-25 USER: D TUNBLAST XMSQ N4	DDH SEE NOTES TUNBLAST XMSQ N4	10F1	10F1