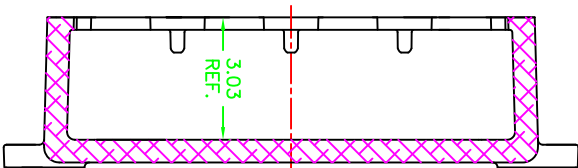
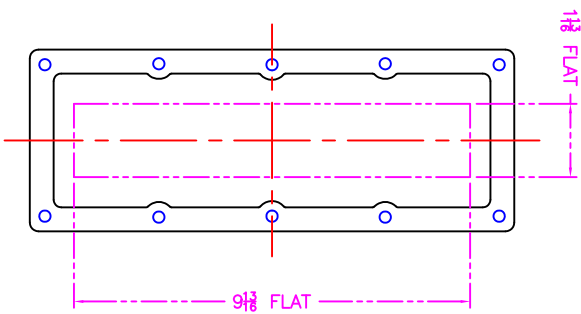


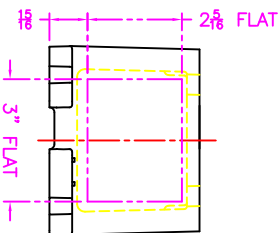
SECTION A-A



XIF(C)(X) 0311 (N4) COVER



**DIMENSIONS SHOWN ARE FOR REFERENCE ONLY,
NOT FOR MANUFACTURING.
CONTACT ADALET ENGINEERING FOR TIGHT FITS OR
TOLERANCE ISSUES !**



NO HOT SOLID BRANDING
 DIMENSIONS ARE SHOWN TO UNLESS OTHERWISE SPECIFIED.
 CHAMFER TO FORM 2:1 - 2:8
 USE UNLESS OTHERWISE SPECIFIED.
 FILET OR CHAMFER RADIUS 1/8"
 RING, 4:1/8"

ANGLES ± 1°
 UNLESS OTHERWISE SPECIFIED.
 UNLESS OTHERWISE SPECIFIED:
 SURFACE FINISH: MILLING - XXX ± .010"
 TURNING - .015" R. OR .42
 FILET RADIUS: .03"

THIRD ANGLE PROJECTION
 UNLESS OTHERWISE SPECIFIED
 WE SHIP E-24-1-10

ADALET
 A SCOTT FEITZER COMPANY
 Enclosure Systems - Cable Accessories
 Cleveland, OH 44135

NOTICE TO PERSONS RECEIVING THIS DRAWING:
 THIS DRAWING IS THE PROPERTY OF ADALET. IT IS TO BE USED FOR THE PROJECT AND NO PART OF IT IS TO BE REPRODUCED OR TRANSMITTED IN ANY FORM OR BY ANY MEANS, ELECTRONIC OR MECHANICAL, INCLUDING PHOTOCOPYING, RECORDING, OR BY ANY INFORMATION STORAGE AND RETRIEVAL SYSTEM, WITHOUT THE WRITTEN PERMISSION OF ADALET. RETURN TO THE USER.

SEE NOTES
 TUMBLAST

QTY NO. XIF(C)(X) 031103 (N4)

DATE	BY	DATE	BY
01/20/10	MCP	01/20/10	MCP
DATE	BY	DATE	BY
1-25	C	1-25	C
DATE	BY	DATE	BY
10F1		10F1	