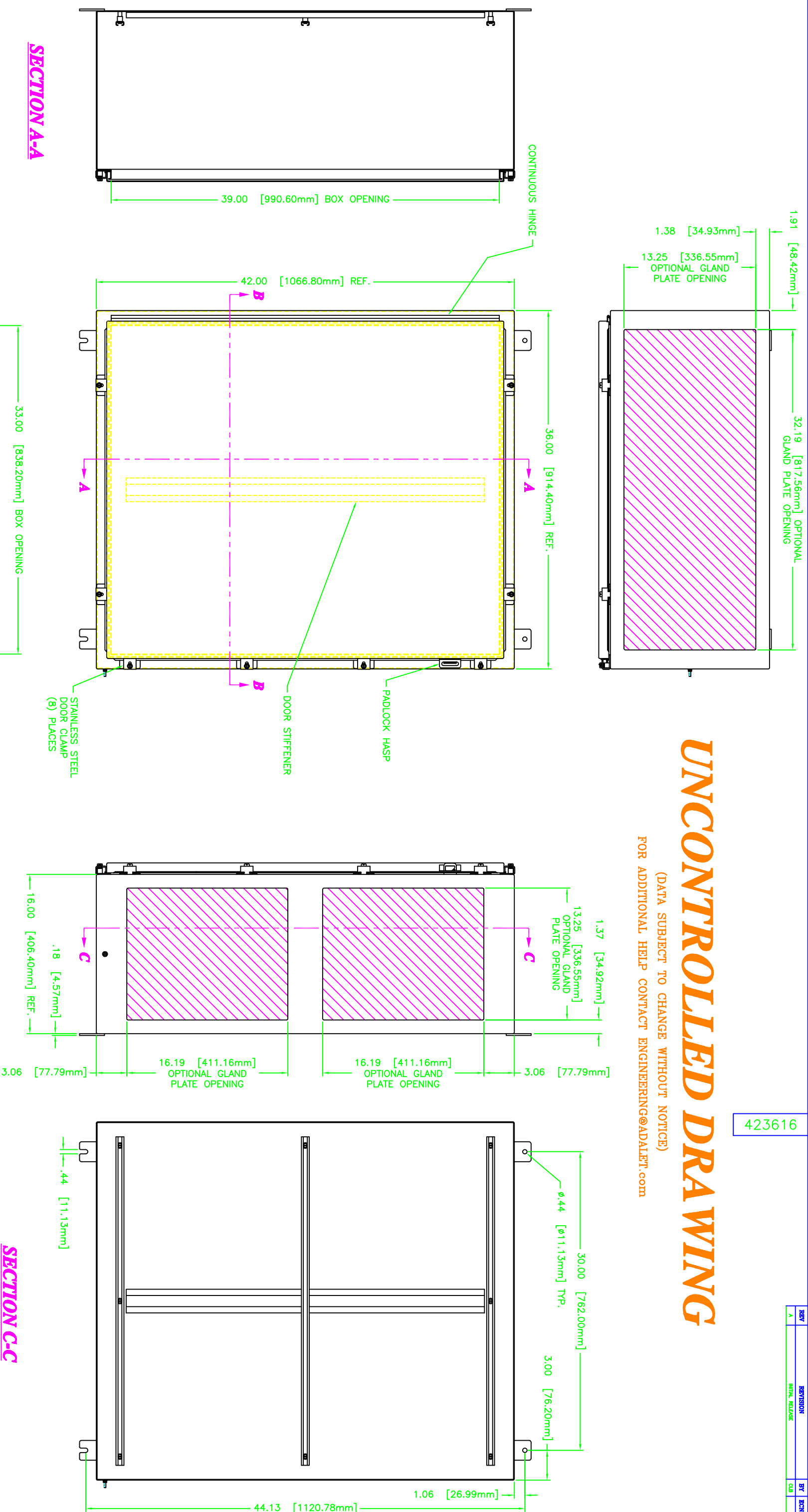


423616

# UNCONTROLLED DRAWING

(DATA SUBJECT TO CHANGE WITHOUT NOTICE)  
FOR ADDITIONAL HELP CONTACT ENGINEERING@ADALEFT.COM



ENCLOSURE MATERIAL	CATALOG NUMBER	PART NUMBER
SS316L	TN4X6-423616U	M11419
SS304	TN4X-423616U	M11146

NO NOT SCALE DRAWING		DATE	
UNLESS OTHERWISE SPECIFIED	STANDARD DIMENSIONS AND FINISHES	DATE	12/3/08
SHEET METAL TOLERANCES	SEE SCHEMATIC DRAWING	DATE	12/3/08
NOT OTHERWISE SPECIFIED:	SEE SCHEMATIC DRAWING	DATE	12/3/08
FRAM 1/16"	SEE SCHEMATIC DRAWING	DATE	12/3/08
XXX ± .03"	SEE SCHEMATIC DRAWING	DATE	12/3/08
ANGLES 3/16"	SEE SCHEMATIC DRAWING	DATE	12/3/08
MINOR END TOLERANCES ± .004" NOM.	SEE SCHEMATIC DRAWING	DATE	12/3/08
WAVELENGTH ± .1/16" PER FOOT	SEE SCHEMATIC DRAWING	DATE	12/3/08
ALL FIELD SIZES ARE NOM.	SEE SCHEMATIC DRAWING	DATE	12/3/08

ADALEFT		DATE	
UNLESS OTHERWISE SPECIFIED	STANDARD DIMENSIONS AND FINISHES	DATE	12/3/08
SHEET METAL TOLERANCES	SEE SCHEMATIC DRAWING	DATE	12/3/08
NOT OTHERWISE SPECIFIED:	SEE SCHEMATIC DRAWING	DATE	12/3/08
FRAM 1/16"	SEE SCHEMATIC DRAWING	DATE	12/3/08
XXX ± .03"	SEE SCHEMATIC DRAWING	DATE	12/3/08
ANGLES 3/16"	SEE SCHEMATIC DRAWING	DATE	12/3/08
MINOR END TOLERANCES ± .004" NOM.	SEE SCHEMATIC DRAWING	DATE	12/3/08
WAVELENGTH ± .1/16" PER FOOT	SEE SCHEMATIC DRAWING	DATE	12/3/08
ALL FIELD SIZES ARE NOM.	SEE SCHEMATIC DRAWING	DATE	12/3/08