

CN SERIES - CONTROLS

Selector Switches

SELECTOR SWITCH

Cat #	Cam	# Pos.	Type
EHSS	1	2	2 POSITION - Maintained
EHSS	2-6	3	3 POSITION - Maintained
EHSC	2-6	3	Spring return center from right and left
EHSR2	1	2	Spring return to left from right
EHSR	2-6	3	Spring return center from right, maintain left
EHSL2	1	2	Spring return to right from left
EHSL	2-6	3	Spring return center from left, maintain right

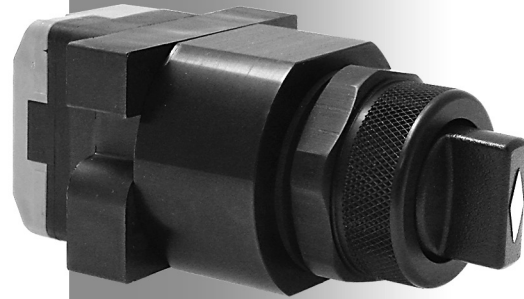
KEYED SELECTOR SWITCH

Cat #	Cam	# Pos.	Type
EHKSS	1	2	2 POSITION - Maintained
EHKSS	2-6	3	3 POSITION - Maintained
EHKSC	2-6	3	Spring return center from right and left
EHKSR2	1	2	Spring return to left from right
EHKSR	2-6	3	Spring return center from right, maintain left
EHKSL2	1	2	Spring return to right from left
EHKSL	2-6	3	Spring return center from left, maintain right

- NOTES**
1. Adalet EBT contact blocks are 1NO / 1NC Standard
 2. A max of 2 blocks per operator
 3. One EBT contact block is standard

CONTACT SEQUENCE CHART

Circuit of Contact Block	Mounting Position	Cam 1 Contact Sequence	Cam 2 Contact Sequence	Cam 3 Contact Sequence	Cam 4 Contact Sequence	Cam 5 Contact Sequence	Cam 6 Contact Sequence
O = Contact Open X = Contact Closed							
Normally Closed (NC)	A	X O	XX O	XX O	X O X	O O X	O O X
Normally Open (NO)	A	O X	O O X	O O X	O X O	X X O	O X O
Normally Closed (NC)	B	X O	O X O	O X X	X O O	O X X	X O O
Normally Open (NO)	B	O X	X O X	X O O	O X X	X O O	O O X



Certifications

Class I, Division 2, Groups A, B, C, D

Class II, Groups E, F, G (Canada Only)

Class I, Zone 1, AEx de IIC T6 -55°C < Ta < +60°C

Ex de IIC T6 X -55°C < Ta < +60°C

IECEX Ex de IIC Gb -55°C < Ta < +60°C

CE0539 Ex II 2 G Ex e II C T6 (T5: Ta < +55°C)(T4: Ta < +70°C)

CE0539 Ex II 2 D Ex tD A21 IP66 T200°C

IECEX Ex tb IIIC Db IP66

DIP

DIP A21 T_A6

