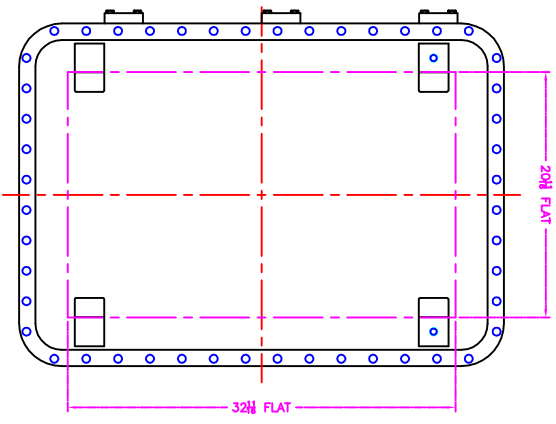
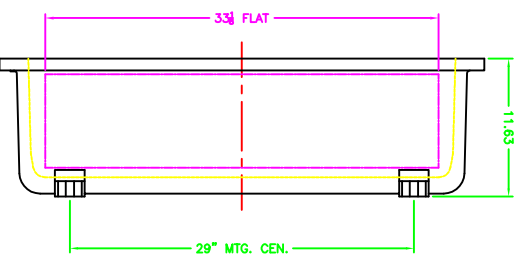
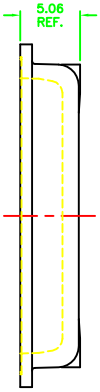
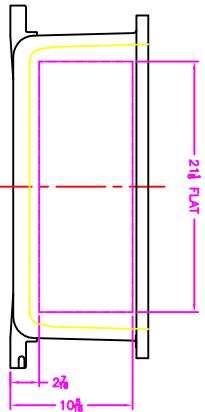


OPTIONAL MTG. PAN



OPTIONAL XHF-3 HINGE



XCE 2436D COVER

- NOTES:
- COVER DRILLING T: MINIMUM SPACING FROM CENTER OF OPERATOR TO NEAREST FLAT IS 1 1/4".
  - ALLOWABLE IN XCE ONLY.
  - MINIMUM SPACING BETWEEN #14 NPSM OPERATOR CENTERS IS 3/4" FOR THIS ENCLOSURE.
  - MAXIMUM NUMBER OF OPERATORS IS 54.
  - DIMENSION FROM CENTER LINE OF COVER FOR OPERATORS.
  - DIMENSION FROM CENTER LINE AND BACK OF MTG. LUG FOR CONDUIT.
  - FOR MTG. ENCLOSURE USE # BOLT.

		MODIFIED XCE 243612 ENCLOSURE FOR	
DATE: 9/17/03 DRAWN BY: AMJ CHECKED BY: D TOLERANCES: UNLESS OTHERWISE SPECIFIED: FRACTIONS: 1/16" MINIMUM DECIMALS: 0.005" MINIMUM DIMENSIONS: UNLESS OTHERWISE SPECIFIED	SEE NOTES TUMBLAST XCE 243612	10F1	10F1