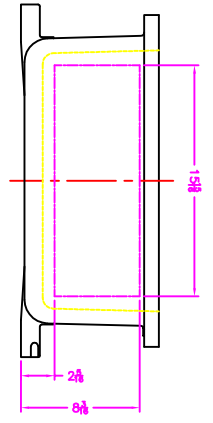
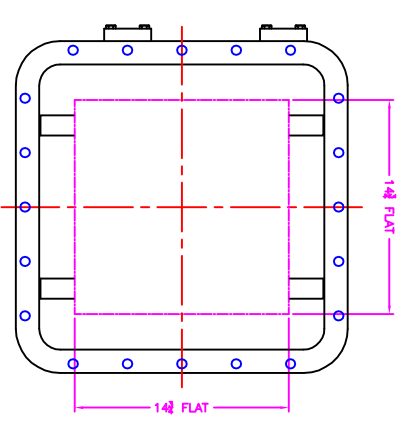


XCE 1818 COVER



- NOTES:
- MINIMUM SPACING FROM CENTER OF OPERATOR TO NEAREST FLAT IS 1 1/4"
 - MINIMUM SPACING BETWEEN #1-14 NPSM OPERATOR CENTERS IS 3/4" FOR THIS ENCLOSURE.
 - MAXIMUM NUMBER OF OPERATORS IS 16.
 - DIMENSION FROM CENTER LINE OF COVER FOR OPERATORS.
 - DIMENSION FROM CENTER LINE AND BACK OF MFG. LUG FOR CONDUIT.
 - FOR MFG. ENCLOSURE USE # BOLT.

		MODIFIED XCE/XUF 181808 ENCLOSURE FOR	
TUMBLAST XCE/XUF 181808		DDH	11-16-01
10F1		1-4-5	D