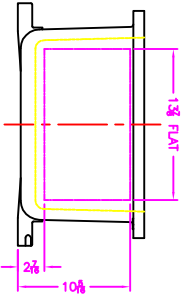


OPTIONAL XHF-4 HINGES

EXISTING GRD. SCREW

OPTIONAL MTG. PAN

XCE 1646 COVER



- NOTES:
1. MINIMUM SPACING FROM CENTER OF OPERATOR TO NEAREST FLAT IS $4\frac{1}{4}$ "
 2. MINIMUM SPACING BETWEEN $\frac{3}{4}$ " X 1/4" IPSM OPERATOR CENTERS IS $3\frac{1}{2}$ " FOR THIS ENCLOSURE.
 3. MAXIMUM NUMBER OF OPERATORS IS 48.
 4. DIMENSION FROM CENTER LINE AND BACK OF MTG. LUG FOR CONDUIT.
 5. DIMENSION FROM CENTER LINE AND BACK OF MTG. LUG FOR CONDUIT.
 6. FOR MTG. ENCLOSURE USE $\frac{1}{2}$ " BOLT.

		MODIFIED XCE/XUF 164610 ENCLOSURE FOR	
DATE: 11-15-01 DRAWN BY: DDH CHECKED BY: 1-8 TITLED BY: D	DATE: 11-15-01 DRAWN BY: DDH CHECKED BY: 1-8 TITLED BY: D	DATE: 11-15-01 DRAWN BY: DDH CHECKED BY: 1-8 TITLED BY: D	DATE: 11-15-01 DRAWN BY: DDH CHECKED BY: 1-8 TITLED BY: D
TUBELAST XCE/XUF 164610		10F1	