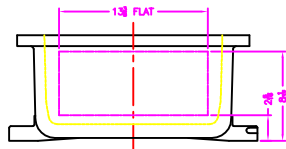


XCE 1624 COVER

NOTES:

- 1. COVER DRILLING ALLOWABLE IN XCE ONLY
- 2. MINIMUM SPACING FROM CENTER OF OPERATOR TO NEAREST FLAT IS 10.
- 3. MINIMUM SPACING BETWEEN 2-14 NPSM OPERATOR CENTERS IS 3 FOR THIS ENCLOSURE.
- 4. MAXIMUM NUMBER OF OPERATORS IS 24.
- 5. DIMENSION FROM CENTER LINES OF COVER FOR OPERATORS.
- 6. DIMENSION FROM CENTER LINE AND BACK OF MTO. LUG FOR CONDUIT.
- 7. FOR MTO. ENCLOSURE USE 1/2 BOLT.



		MODIFIED XCE/XHF 162408 ENCLOSURE FOR	
DATE: 11-09-01 BY: DGH	DATE: 11-09-01 BY: DGH	DATE: 11-09-01 BY: DGH	DATE: 11-09-01 BY: DGH
TUMBLAST XCE/XHF 162408			10F1