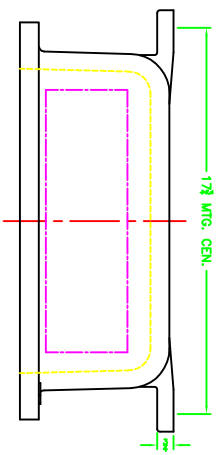
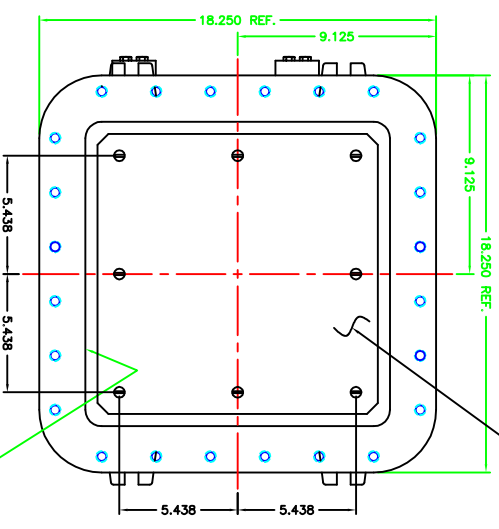
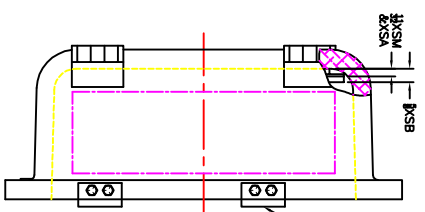


REV	DATE	BY	CHK

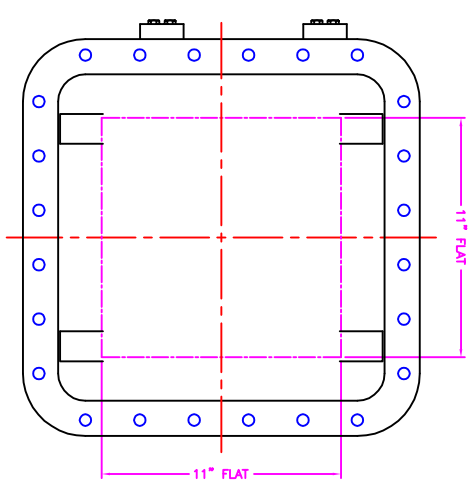
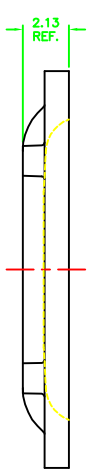
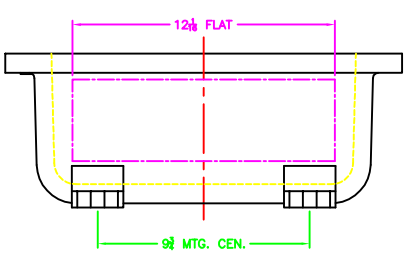


OPTIONAL XHC-2 HINGE

OPTIONAL MTC. PAN

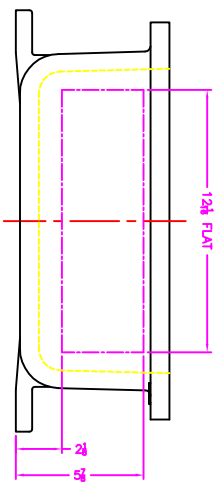


EXISTING GRD. SCREW



XCE 1414 COVER

- NOTES:
- COVER DRILLING ALLOWABLE IN XCE ONLY.
 - MINIMUM SPACING FROM CENTER OF OPERATOR TO NEAREST FLAT IS 1 1/8".
 - MINIMUM SPACING BETWEEN #14 NPSM OPERATOR CENTERS IS 3 FOR THIS ENCLOSURE.
 - MINIMUM SPACING BETWEEN #14 NPSM OPERATOR CENTERS IS 3 FOR THIS ENCLOSURE.
 - DIMENSION FROM CENTER LINE AND BACK OF MTC. LUG FOR CONDUIT.
 - FOR MTC. ENCLOSURE USE 1 BOLT.



		MODIFIED XCE/XUF 141406 ENCLOSURE FOR	
DATE: 11-13-01 BY: DDH CHECKED: 1-3 D	TUMBLAST XCE/XUF 141406	10F1	10F1