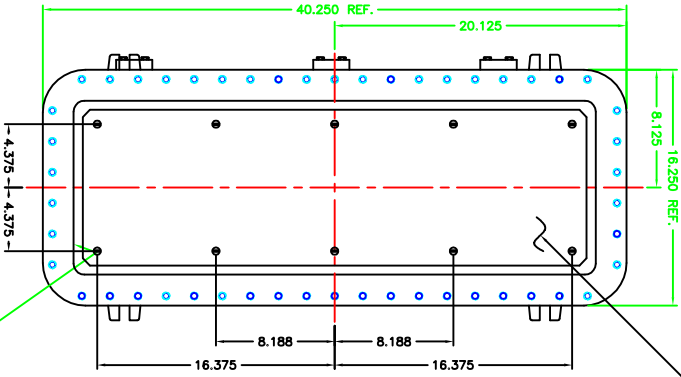
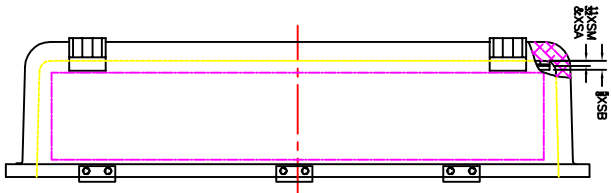
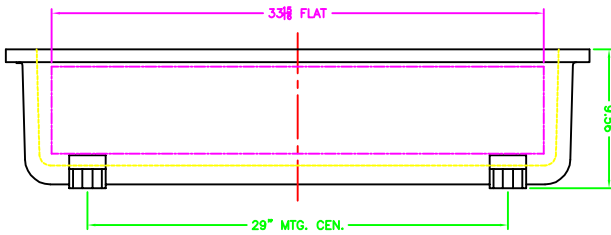
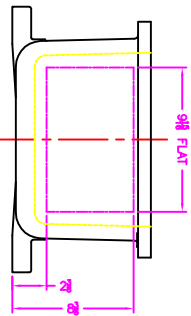


OPTIONAL MTG. PAN

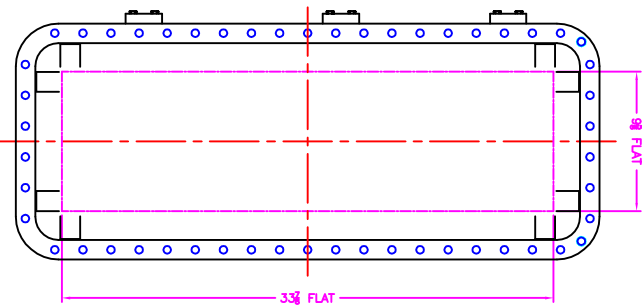
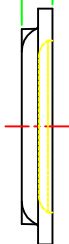


OPTIONAL XHD-3 HINGES

EXISTING GRD. SCREW



2.13 REF.



XCE 1236 COVER

- NOTES:
1. MINIMUM SPACING FROM CENTER OF OPERATOR TO NEAREST FLAT IS 1/4".
 2. MINIMUM SPACING BETWEEN 1/4" NPSM OPERATOR CENTERS IS 3 FOR THIS ENCLOSURE.
 3. MINIMUM NUMBER OF OPERATORS IS 33 FOR OPERATORS.
 4. DIMENSION FROM CENTER LINE AND BACK OF MFG. LUG FOR CONDUIT.
 5. DIMENSION FROM CENTER LINE AND BACK OF MFG. LUG FOR CONDUIT.
 6. FOR MFG. ENCLOSURE USE 1 BOLT.

		MODIFIED XCE/XUF 123608 ENCLOSURE FOR	
XCE/XUF 123608 TUMBLAST		DDH	11-13-01
XCE/XUF 123608		1-4-05	D
10F1		10F1	