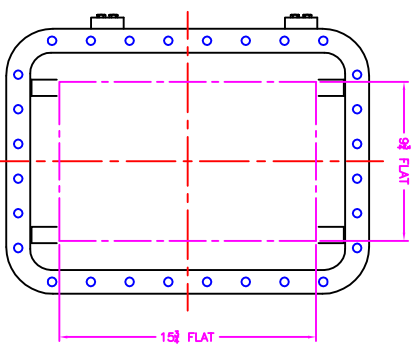
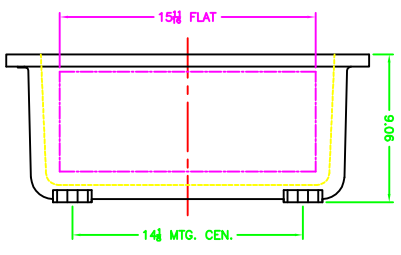
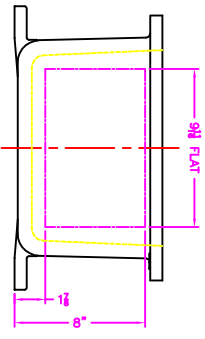


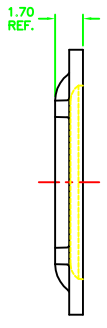
OPTIONAL MTG. PAN

OPTIONAL XHC-2 HINGES

EXISTING GRD. SCREW



XCE 1218 COVER



- NOTES:
- COVER DRILLING IT MINIMUM SPACING FROM CENTER OF OPERATOR TO NEAREST FLAT IS 1 1/8".
 - ALLOWABLE IN XCE ONLY.
 - MINIMUM SPACING BETWEEN OPERATORS IS 3".
 - MINIMUM SPACING BETWEEN OPERATORS IS 1 1/2".
 - DIMENSION FROM CENTER LINE OF COVER FOR OPERATORS.
 - DIMENSION FROM CENTER LINE AND BACK OF MFG. LUG FOR CONDUIT.
 - FOR MFG. ENCLOSURE USE 1 BOLT.

		MODIFIED XCE/XUF 121808 ENCLOSURE FOR	
DATE: 11-12-01 BY: DDH	DATE: 11-12-01 BY: DDH	DATE: 11-12-01 BY: DDH	DATE: 11-12-01 BY: DDH
TUMBLAST XCE/XUF 121808		10F1	