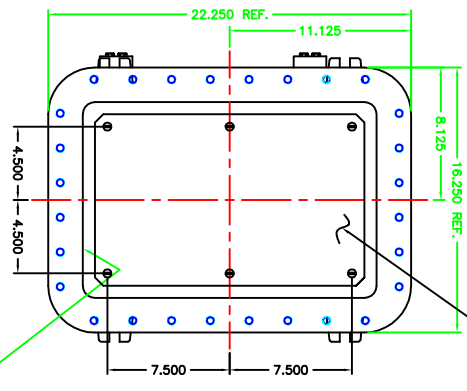
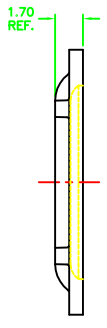
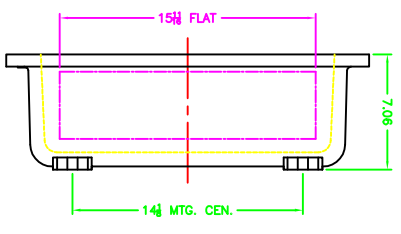
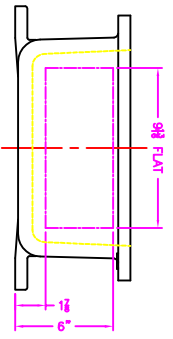


OPTIONAL XHC-2 HINGES

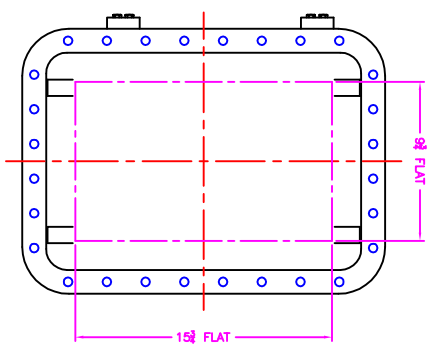


OPTIONAL MTG. PAN

EXISTING GRD. SCREW



XCE 1218 COVER



- NOTES:
- COVER DRILLING TO MINIMUM SPACING FROM CENTER OF OPERATOR TO NEAREST FLAT IS 1 1/8".
 - ALLOWABLE IN XCE ONLY.
 - MINIMUM SPACING BETWEEN OPERATORS IS 3".
 - MINIMUM SPACING BETWEEN OPERATORS IS 1 1/2".
 - DIMENSION FROM CENTER LINE OF COVER FOR OPERATORS.
 - DIMENSION FROM CENTER LINE AND BACK OF MFG. LUG FOR CONDUIT.
 - FOR MFG. ENCLOSURE USE 1 BOLT.

		MODIFIED XCE/XUF 121806 ENCLOSURE FOR	
DATE: 11-12-01 BY: DDH CHECKED: 1-4 APPROVED: D	TUMBLAST XCE/XUF 121806	10F1	10F1