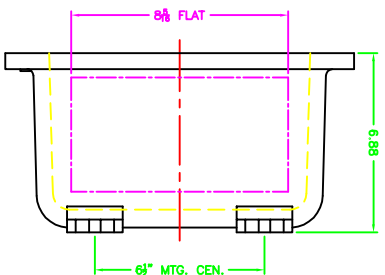
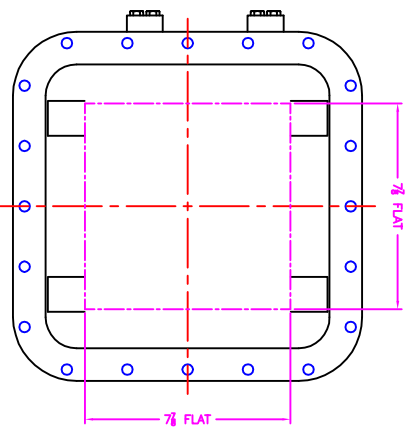
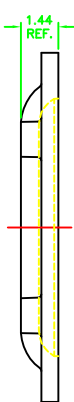
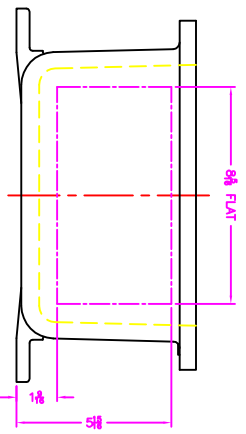


OPTIONAL MTG. PAN



EXISTING GRD. SCREW



XCE 1010 COVER

- NOTES:
1. MINIMUM SPACING FROM CENTER OF OPERATOR TO NEAREST FLAT IS 1 1/4"
 2. MINIMUM SPACING BETWEEN #14 NPSM OPERATOR CENTERS IS 2 1/2" FOR THIS ENCLOSURE.
 3. MAXIMUM NUMBER OF OPERATORS IS 9.
 4. DIMENSION FROM CENTER LINE TO OUTER EDGE OF OPERATOR IS 1 1/2".
 5. DIMENSION FROM CENTER LINE TO OUTER EDGE OF MFG. LUG FOR CONDUIT.
 6. FOR MFG. ENCLOSURE USE 3/8 BOLT.

		MODIFIED XCE/XAF 101006 ENCLOSURE FOR	
XCE/XAF 101006 TUMBLAST	DDH 6-13-01 1-25 D	XCE/XAF 101006 TUMBLAST	10F1