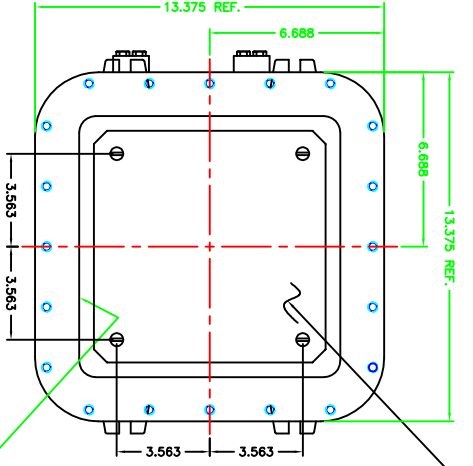
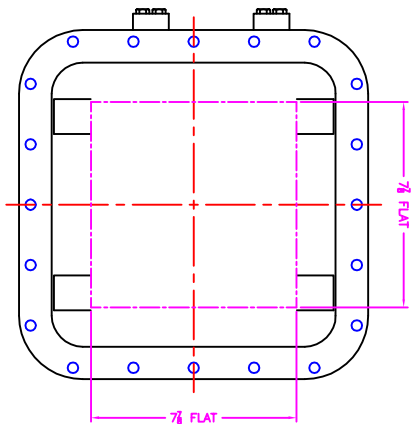
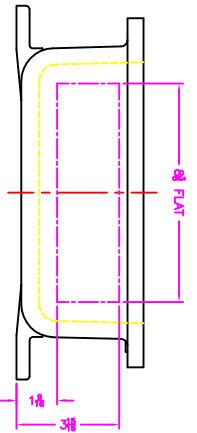
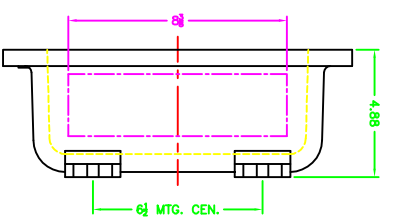


OPTIONAL XHB-2 HINGE



OPTIONAL MFG. PAN

EXISTING GRD. SCREW



XCE 1010 COVER

- NOTES:
1. MINIMUM SPACING FROM CENTER OF OPERATOR TO NEAREST FLAT IS  $1\frac{1}{8}$ .
  2. MINIMUM SPACING BETWEEN  $1\frac{1}{4}$  UPSU OPERATOR CENTERS IS  $2\frac{1}{2}$  FOR THIS ENCLOSURE.
  3. MAXIMUM NUMBER OF COVER FOR OPERATORS IS 2.
  4. DIMENSION FROM CENTER LINE OF COVER FOR OPERATORS.
  5. DIMENSION FROM CENTER LINE AND BACK OF MFG. LUG FOR CONDUIT.
  6. FOR MFG. ENCLOSURE USE 3/8 BOLT.

		MODIFIED XCE/XAF 101004 ENCLOSURE FOR	
DATE: 6-13-01 BY: DDH	DATE: 6-13-01 BY: DDH	DATE: 6-13-01 BY: DDH	DATE: 6-13-01 BY: DDH
TUBELAST XCE/XAF 101004	TUBELAST XCE/XAF 101004	TUBELAST XCE/XAF 101004	TUBELAST XCE/XAF 101004
10F1	10F1	10F1	10F1