

OPTIONAL XHB-2 HINGE

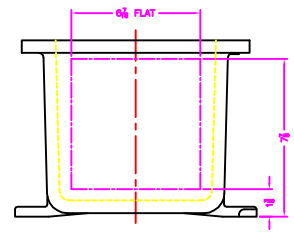
OPTIONAL MTC. PAN

EXISTING GRD. SCREW

XCE 0812 COVER

NOTES:

- COVER DRILLING ALLOWABLE IN XCE ONLY
1. MINIMUM SPACING FROM CENTER OF OPERATOR TO NEAREST FLAT IS 1 1/2.
 2. MINIMUM SPACING BETWEEN 2-14 NPSM OPERATOR CENTERS IS 2 1/2 FOR THIS ENCLOSURE.
 3. MAXIMUM NUMBER OF OPERATORS IS 6.
 4. DIMENSION FROM CENTER LINES OF COVER FOR OPERATORS.
 5. DIMENSION FROM CENTER LINE AND BACK OF MTC. LUG FOR CONDUIT.
 6. FOR MTC. ENCLOSURE USE 3/8 BOLT.



| | | | |
|----------------------------|--------------------------|---------------------------------------|-------------------|
| | | MODIFIED XCE/XAF 081208 ENCLOSURE FOR | |
| DATE: 8-13-01 BY: DOH | DATE: 8-13-01 BY: DOH | DATE: 1-2-05 BY: D | DATE: 10F1 BY: |
| TUMBLAST XCE/XAF 081208 | | | |