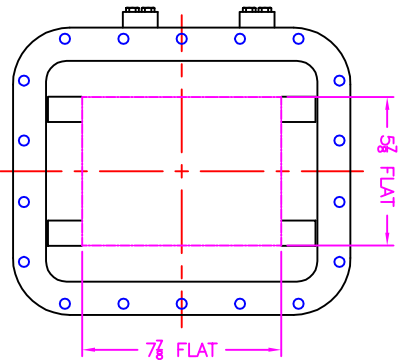
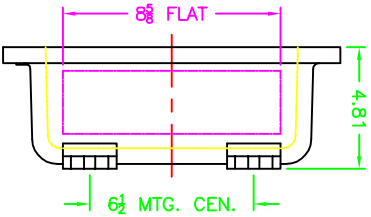
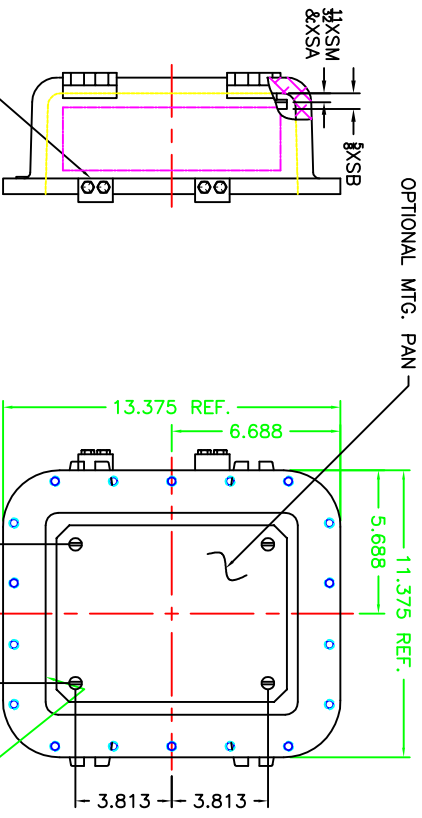
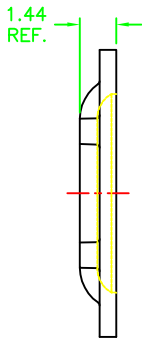
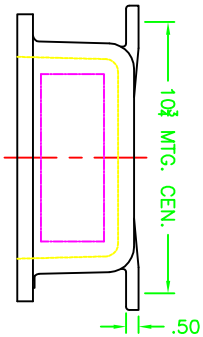




REV	REVISION	BY	ECN	DATE



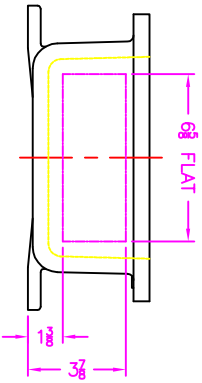
OPTIONAL XHB-2 HINGES

OPTIONAL MTG. PAN

EXISTING GRD. SCREW

XCE 0810 COVER

- NOTES:
- COVER DRILLING ALLOWABLE IN XCE ONLY
  - MINIMUM SPACING FROM CENTER OF OPERATOR TO NEAREST FLAT IS  $1 \frac{1}{8}$ .
  - MINIMUM SPACING BETWEEN  $\frac{3}{4}$ -14 NPSM OPERATOR CENTERS IS  $2 \frac{1}{2}$  FOR THIS ENCLOSURE.
  - MAXIMUM NUMBER OF OPERATORS IS 6.
  - DIMENSION FROM CENTER LINES OF COVER FOR OPERATORS.
  - DIMENSION FROM CENTER LINE AND BACK OF COVER FOR MTG. LUG FOR CONDUIT.
  - FOR MTG. ENCLOSURE USE  $3/8$  BOLT.



<p>NO HOT SCALE BRATING</p> <p>TUMBLAST OPERATING TEMPERATURE            CAPY TOLERANCES OR DIMENSIONS            FILED OR CORNER RADIUS <math>1/8"</math>            ANGLES <math>\pm .1"</math>            FILED RADIUS <math>.03" \pm .015"</math> R. OR <math>42"</math>            ANGLE <math>\pm .015"</math> R. OR <math>42"</math>            PER F-21-2.6            WPSM E-24-1.0</p>		<p><b>ADALETT</b>            A SCOTT FETTER COMPANY            Mechanical Division</p>		<p>DESIGNED BY: DDH</p> <p>DRAWN BY: DDH</p> <p>DATE: 6-12-01</p>	
<p>NOTICE TO PERSON RECEIVING THIS DRAWING:            THIS DRAWING IS TO BE USED AS A REFERENCE            ONLY. THE MANUFACTURER SHALL BE RESPONSIBLE            FOR ANY DIMENSIONAL CHANGES AND SHALL            NOTIFY THE USER IN WRITING. THIS DRAWING            SHALL NOT BE USED FOR THE PRODUCTION OF            ANY OTHER PARTS WITHOUT THE WRITTEN            APPROVAL OF THE USER.</p>		<p>MODIFIED XCE/XJF 081004 ENCLOSURE            FOR</p>		<p>DATE: 1-4</p> <p>BY: C</p>	
<p>DATE: 1-4</p>		<p>DATE: 1-4</p>		<p>DATE: 1-4</p>	
<p>CAT NO: XCE/XJF 081004</p>		<p>DATE: 1-4</p>		<p>DATE: 1-4</p>	
<p>TUMBLAST</p>		<p>DATE: 1-4</p>		<p>DATE: 1-4</p>	
<p>DATE: 10F1</p>		<p>DATE: 10F1</p>		<p>DATE: 10F1</p>	