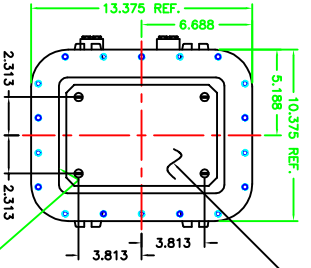
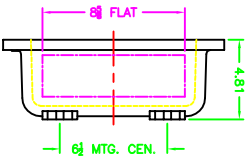


OPTIONAL XHB-2 HINGES

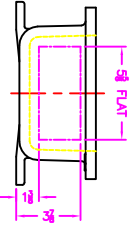
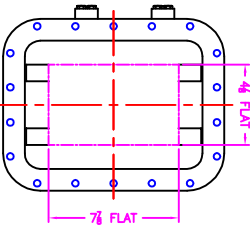


OPTIONAL MTG. PAN



EXISTING GRD. SCREW

XCE 0710 COVER



- COVER DRILLING ALLOWABLE IN XCE ONLY
1. MINIMUM SPACING FROM CENTER OF OPERATOR TO NEAREST FLAT IS $1\frac{1}{8}$
 2. MINIMUM SPACING BETWEEN $\frac{3}{16}$ - $1\frac{1}{4}$ NPSM OPERATOR CENTERS IS $2\frac{1}{2}$ FOR THIS ENCLOSURE.
 3. MAXIMUM NUMBER OF OPERATORS IS 6.
 4. DIMENSION FROM CENTER LINES OF COVER FOR OPERATORS.
 5. DIMENSION FROM CENTER LINES AT EACH OF MTS. LUG FOR CONDUIT.
 6. FOR MTS. ENCLOSURE USE $\frac{3}{8}$ BOLT.

NOTES:

		MODIFIED XCE/XAF 071004 ENCLOSURE FOR	
DATE: 06-12-01 BY: DBH CHECKED: 1-4 APPROVED: C	DATE: 06-12-01 BY: DBH CHECKED: 1-4 APPROVED: C	DATE: 06-12-01 BY: DBH CHECKED: 1-4 APPROVED: C	DATE: 06-12-01 BY: DBH CHECKED: 1-4 APPROVED: C