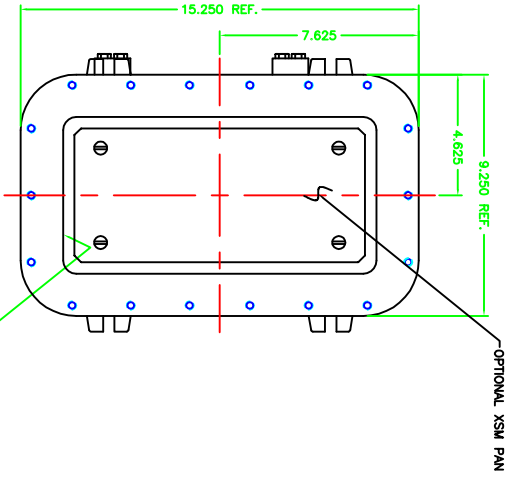
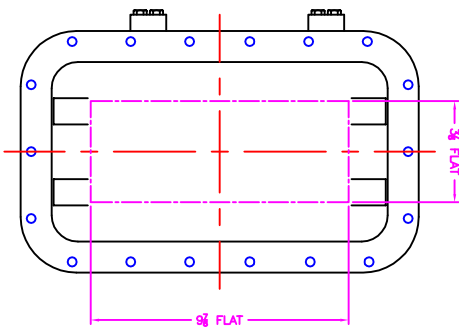
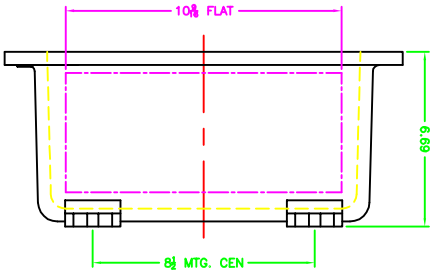


OPTIONAL XHB-2 HINGES



OPTIONAL XSM PAN

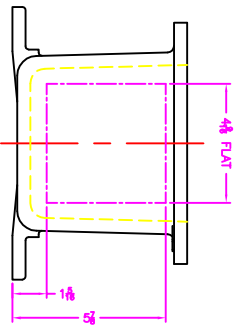
EXISTING GRD. SCREW



XCE 0612 COVER

NOTES:

1. MINIMUM SPACING FROM CENTER OF OPERATOR TO NEAREST FLAT IS 1 1/8".
2. MINIMUM SPACING BETWEEN 3-14 NPSM OPERATOR CENTERS IS 2 1/2" FOR THIS ENCLOSURE.
3. MAXIMUM NUMBER OF OPERATORS IS 4.
4. DIMENSION FROM CENTER LINES OF COVER FOR OPERATORS.
5. DIMENSION FROM CENTER LINES AND BACK OF MTC. LUG FOR CONDUIT.
6. FOR MTC. ENCLOSURE USE 5/8 BOLT.



		MODIFIED XCE/XUF 061206 ENCLOSURE FOR	
XCE/XUF 061206 TUMBLAST		DDH	5-10-01
XCE/XUF 061206		1-2-5	D
10F1		10F1	