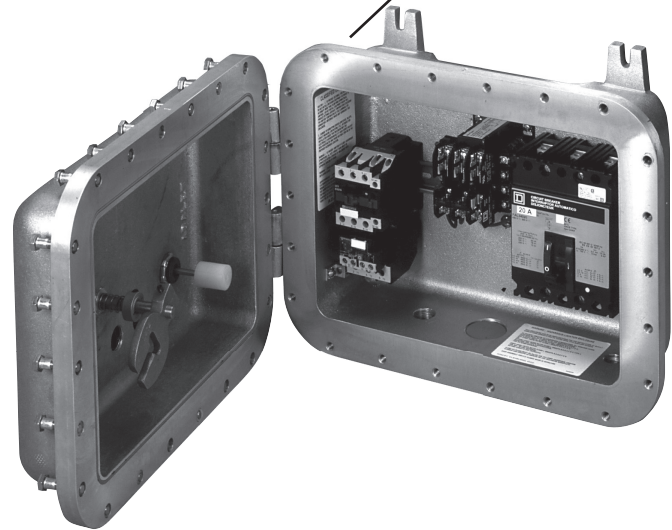


XCPX Enclosure Series

The Adalet XCPX series ATEX Certified Control Panels are designed to provide a complete ATEX equipment certificate to final assemblies direct from ADALET without additional third party testing & approvals. Utilizing our ATEX Certified empty XCEX series of flameproof control enclosures, Adalet can fully populate our control enclosures with any CE approved device and provide the engineering services required to certify your final assembly as an ATEX control panel with a complete ATEX Equipment Certificate.

Copper-free aluminum construction with a corrosion-resistant tumblast finish



EXPLOSIONPROOF
ENCLOSURES

STANDARD FEATURES

- 75 standard sizes available
- Corrosion resistant, copper free aluminum
- Turnkey engineering and panel population / assembly
- Drilled and tapped conduit entries per customer design specifications
- Pre-drilled hinge holes (hinge optional) and mounting panel bosses (mounting panel optional)
- Type 4 watertight gasket
- High strength steel cover bolts (zinc plated and coated)
- Internal / external grounding screws
- Removable lifting eye bolts (18 x 24 and larger)
- Lid-lifter cover alignment device (18 x 24 and larger)
- Cast-on mounting lugs / feet
- Tumblast, natural aluminum finish

DESIGN OPTIONS

- Stainless steel cover bolts for Type 4X additional corrosion protection
- Mounting panels - available in galvanized steel (XSM), aluminum (XSA) or phenolic (XSB)
- Aluminum hinge kits with stainless steel hardware
- Operators and auxiliary devices such as breather / drains and flame arrestors
- Window kits - round (up to 8" viewing diameter) or square / rectangle (up to 13" x 13")
- Custom machining - milling, counter-boring, spot-facing, blind drilled holes, entries, chamfers
- Custom cast-on logos
- Powder and epoxy coating for additional corrosion resistance
- Special mounting provisions

MATERIAL

- Enclosure - Copper free aluminum (¾ of 1%)
- Cover Bolts - Steel, zinc plated and coated
- Hinge Kits - Copper free aluminum with stainless steel hardware
- Mounting panel - Galvanized steel, aluminum or phenolic

CERTIFICATIONS

Class I, Division 1, Groups B*, C*, D
Class II, Division 1, Groups E, F, & G
Class III
Class I, Zone 1, AEx d IIB
Ex d IIB
NEMA Type 4, 7, 9
CE 0539 Ex II 2 GD

Ex d IIB+H2 T6
Ex d IIB+H2 T5 (Tamb +60 °C)
Ex tD A21 IP66 T100 C



*Limitations on internal electrical components, consult factory

SEND ORDERS TO ORDERS@ADALET.COM

T: 216.267.9000 | F: 216.267.1681 | info@adalet.com

©Adalet