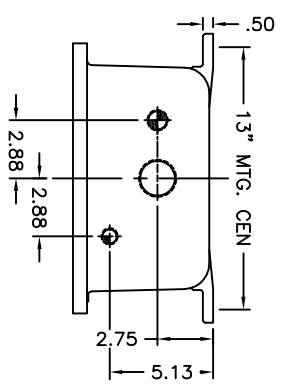
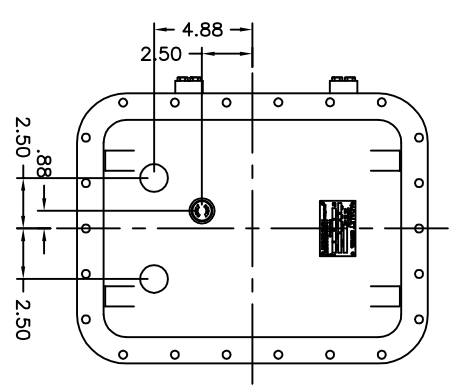
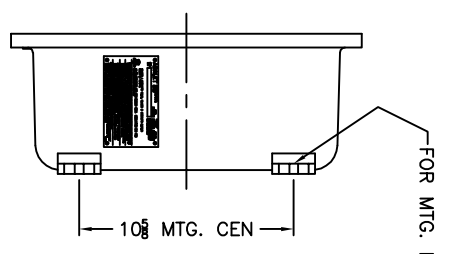
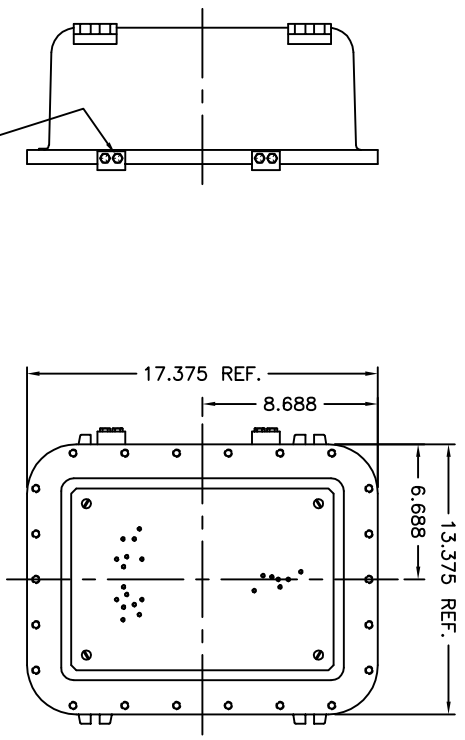


REV	REVISION	BY	EN	DATE



# UNCONTROLLED DRAWING

(DATA SUBJECT TO CHANGE WITHOUT NOTICE)  
 FOR ADDITIONAL HELP CONTACT [ENGINEERING@ADALET.COM](mailto:ENGINEERING@ADALET.COM)



**XMSD N4**

- INSTALL XHB-2 HINGES
- 45/64 DRILL THRU  
1/2-14 NPT  
(2) PLACES
- 1 47/64 DRILL THRU  
1 1/2-11 1/2 NPT  
(2) PLACES
- 29/32 DRILL THRU  
3/4-14 NPT  
(2) PLACES

<p>NO HOT SCALE DRAWING</p> <p>TUNING OPERATIONS SPECIFIED</p> <p>CAD TOLERANCES ON DIMENSIONS</p> <p>AND OPERATIONS SPECIFIED</p> <p>FILED OR CORNER RADIUS 1/8"</p> <p>ANGLES ± 1°</p> <p>FILED RADIUS .03"</p> <p>FILED RADIUS .03" ± .015" R. or 45°</p> <p>ANGLES ± 0.50°</p> <p>QUANTITY FROM THERMAL SHOCK</p> <p>REF: F-21-2.6</p> <p>WHS: E-24-1.0</p>		<p>NOTICE TO PERSONS RECEIVING THIS DRAWING:</p> <p>THIS DRAWING IS THE PROPERTY OF ADALET</p> <p>IT IS TO BE USED ONLY FOR THE PROJECT AND</p> <p>FOR WHICH IT WAS PREPARED. IT IS NOT TO BE</p> <p>REPRODUCED, COPIED, OR TRANSMITTED IN ANY</p> <p>FORM OR BY ANY MEANS, ELECTRONIC OR</p> <p>Mechanical, including photocopying, recording,</p> <p>or by any information storage and retrieval</p> <p>system, without the prior written permission</p> <p>of ADALET.</p>	
<p><b>ADALET</b></p> <p>A SCOTT FELTZER COMPANY</p> <p>Enclosure Systems - Cable Accessories</p> <p>Cleveland, OH</p>		<p>DESIGNED BY: DDH</p> <p>DWG APPROVAL: 12-16-05</p> <p>DATE: 1-5</p> <p>DWG SIZE: C</p>	
<p>MODIFIED XMSD N4 ENCLOSURE</p> <p>FOR</p>		<p>DWG NO: 10F1</p>	