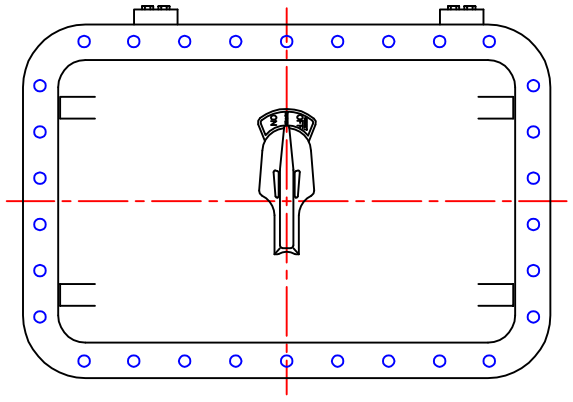
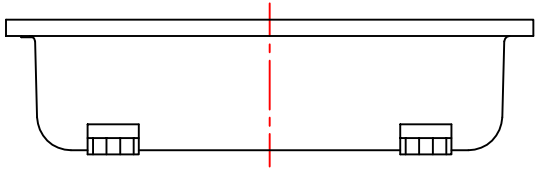
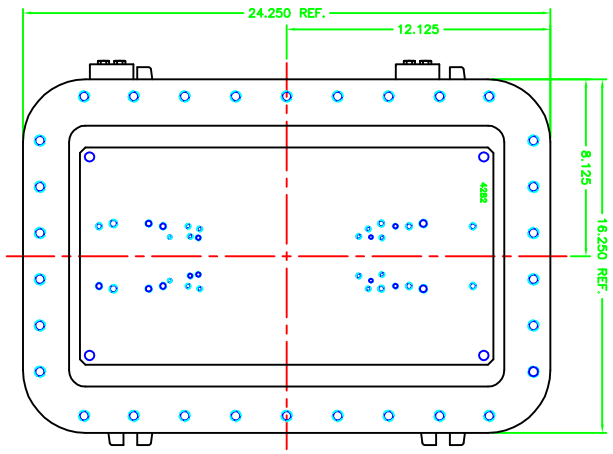
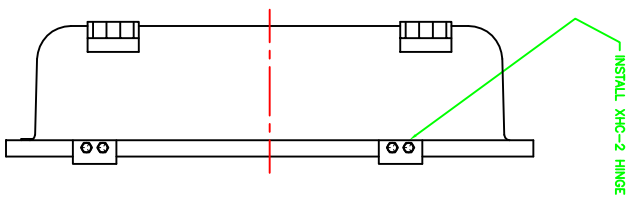
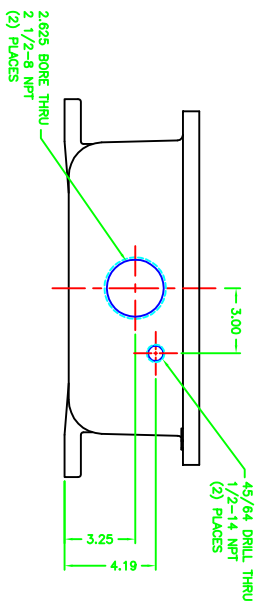


UNCONTROLLED DRAWING

(DATA SUBJECT TO CHANGE WITHOUT NOTICE)
 FOR ADDITIONAL HELP CONTACT ENGINEERING@ADALET.COM



XCBD 1220 N4 COVER



- NOTES:
1. MAKE BOX FROM PART #3191-RW.
 2. REFERENCE DIMS #4278 FOR STANDARD MACHINING.
 3. MAKE COVER FROM PART #3192-RW.
 4. REFERENCE DIMS #4279-26 FOR STANDARD MACHINING.
 5. PROBE OPENING & BACKWALL FOR PROGRAM ZERO (CENTERLINE).

		MODIFIED XCBD N4 ENCLOSURE FOR	
DATE: 12-10-05 BY: DDH CHECKED: 1-3 D SEE NOTES TUMBLAST XCBD N4	DATE: 12-10-05 BY: DDH CHECKED: 1-3 D SEE NOTES TUMBLAST XCBD N4	DATE: 12-10-05 BY: DDH CHECKED: 1-3 D SEE NOTES TUMBLAST XCBD N4	DATE: 12-10-05 BY: DDH CHECKED: 1-3 D SEE NOTES TUMBLAST XCBD N4