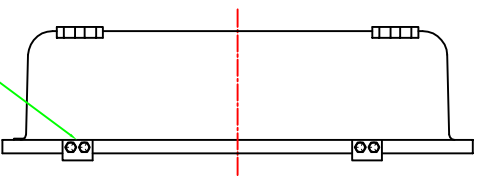
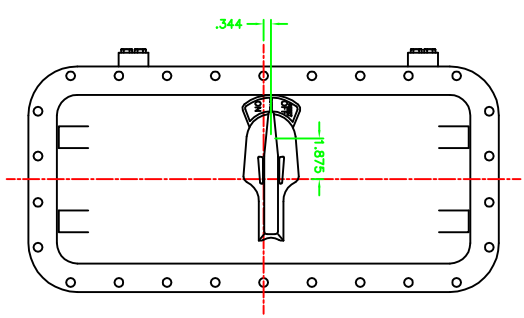
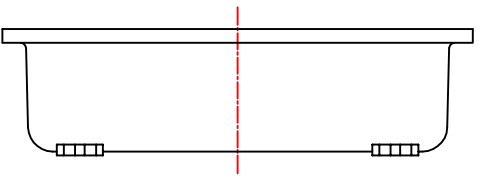
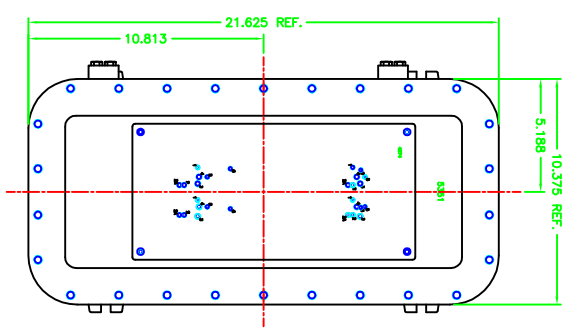


# UNCONTROLLED DRAWING

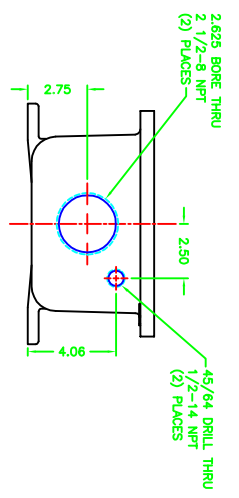
(DATA SUBJECT TO CHANGE WITHOUT NOTICE)  
 FOR ADDITIONAL HELP CONTACT ENGINEERING@ADALET.COM



INSTALL XHB 2 HINGE



XCBC N4 COVER



- NOTES:
1. MAKE BOX FROM PART #5351-RW.
  2. REFERENCE DIM. #4275-1 FOR STANDARD MACHINING.
  3. MAKE COVER FROM PART #3168-RW.
  4. REFERENCE DIM. #4275-2G FOR STANDARD MACHINING.
  5. PROBE OPENING & BACKWALL FOR PROGRAM ZERO (CENTERLINE).

<b>ADALET</b> A SCOTT PETER COMPANY 1000 W. 10TH ST. SUITE 100 DENVER, CO 80202 TEL: 303.733.1100 FAX: 303.733.1101 WWW.ADALET.COM		MODIFIED XCBC N4 ENCLOSURE FOR	
DATE: 12-10-05 BY: DDH CHECKED: 1-3 APPROVED: D	SEE NOTES TUMBLAST XCBC N4	10F1	10F1