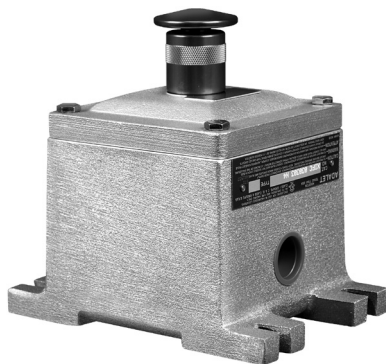


# PRISTAR: Configurable Explosionproof Control Stations



## FEATURES

- Configure with up to 7 devices
- One-piece, NEMA 4 water-tight gasket (UL/CSA stations only)
- Premium, high-strength steel cover bolts
- Internal grounding provisions
- Cast-on mounting feet
- Tumbled surface preparation for uniform, natural aluminum finish
- Wide variety of operating devices

## CONFIGURATION INSTRUCTIONS

- STEP 1:** Select your enclosure size from Table A
- STEP 2:** Select your devices from Tables B1-B4 in order from TOP TO BOTTOM as you would like them installed in your control station
- STEP 3:** Add legend engraving in order from TOP TO BOTTOM as you would like them installed in your control station (please limit characters to 20 per legend)

### EXAMPLE:

**4-Device Control Station w/** Green Momentary Pushbutton w 1NO contact "START"  
 Red Momentary Pushbutton w/ 1NC contact "STOP"  
 Green 120V LED Pilot Light "ON"  
 Maintained E-Stop w/ 1NO/1NC contact "EMERGENCY STOP"

**ORDER AS:** X4-N4-445-451-403-462-START-STOP-ON-EMERGENCY STOP

### Certifications

Class I, Divisions 1 and 2, Groups C and D  
 Class II, Divisions 1 and 2, Groups E, F, and G  
 Class III  
 NEMA Type 4, 7, and 9

UL1203/CSA C22.2 No. 25 & 30  
 UL1203/CSA C22.2 No. 25 & 30  
 UL1203/CSA C22.2 No. 25 & 30  
 UL50



# Configuration Tables

**TABLE A - Select Enclosure Base Upon # of Devices**

# of Operators	UL/CSA Item#	ATEX/IECEX Item#	Std. Conduit Size (feed through)	XIFC Enclosure Size
1	X1 N4	X1X*	¾"	XIFC 030303 N4
2	X2 N4	X2X*	¾"	XIFC 030603 N4
3	X3 N4	X3X*	¾"	XIFC 030703 N4
4	X4 N4	X4X*	1"	XIFC 030903 N4
5	X5 N4	X5X*	1¼"	XIFC 031103 N4
6	X6 N4	X6X*	1¼"	XIFC 031303 N4
7	X7 N4	X7X*	1¼"	XIFC 031503 N4

\*NEMA 4 water-tight gasket not available on ATEX/IECEX Version - IP40 only.

**TABLE B1 - Pilot Lights (Guarded w/Terminal)\***

Color	120V LED	24V LED	120V Incandescent	120V Incandescent
Amber	400	406	337	412
Blue	401	407	338	413
Clear	402	408	339	414
Green	403	409	340	415
Red	404	410	341	416
White	405	411	342	417

\*LED version must be selected for ATEX/IECEX applications.

**TABLE B2 - Pilot Lights (Guarded)**

Color	120V LED	24V LED	120V Incandescent	120V Incandescent
Amber	418	424	430	436
Blue	419	425	431	437
Clear	420	426	432	438
Green	421	427	433	439
Red	422	428	434	440
White	423	429	435	441

**Configuration Tables****TABLE B3 - SELECTOR SWITCHES**

	Contact Block	CAM#	CAM/ Contact Sequence	STANDARD SELECTOR SWITCHES				KEYED SELECTOR SWITCHES				
				Standard Selector Switch	Selector Switch w/Padlock	Spring Ret. Center from R & L	Spring Ret. Center from R	Spring Ret. Center from L	Standard Key Switch	Spring Ret. Center from R & L	Spring Ret. Center from R	Spring Ret. Center from L
<b>Two-Position Switches</b>	BT-1A(1NO/1NC)	1	XO OX	6	283	N/A	N/A	N/A	82	N/A	N/A	N/A
	BT-1B(1NC/1NO)	1	OX XO	7	284	N/A	N/A	N/A	83	N/A	N/A	N/A
	BT-2(2NO)	1	OX OX	8	285	N/A	N/A	N/A	84	N/A	N/A	N/A
<b>Three-Position Switches</b>	BT-3(2NC)	1	XO XO	9	286	N/A	N/A	N/A	85	N/A	N/A	N/A
	BT-2(2NO)	3	XOO OOX	10	293	111	135	159	86	229	249	269
	BT-1B(1NC/1NO)	2	XOX XOX	11	288	112	136	160	87	224	244	264
	BT-2(2NO)	2	XOX OOX	12	289	113	137	161	88	225	245	265
	BT-3(2NC)	2	OXO XOX	13	290	114	138	162	89	226	246	266
	BT-3(2NC)	3	OXX XOX	14	294	115	139	163	90	230	250	270
	BT-1A(1NO/1NC)	2	OXO OOX	15	287	116	140	164	91	223	243	263
	BT-1A(1NO/1NC)	3	OXX OOX	16	291	117	141	165	92	227	247	267
	BT-1B(1NC/1NO)	3	XOO XOX	17	292	118	142	166	93	228	248	268

**TABLE B4 - PUSHBUTTONS**

Momentary Pushbutton Contact Block	Momentary Pushbutton (Black)	Momentary Pushbutton (Green)	Momentary Pushbutton (Red)	Momentary Momentary w/Padlock (Blk)	Momentary Pushbutton w/Padlock (Grn)	Momentary Pushbutton w/Padlock (Red)	Momentary Mushroom Head Pushbutton (Red)	Maintained (Push- Pull ) Mushroom Head Pushbutton (Red)	Maintained (Push- Pull ) Mushroom Head Pushbutton (Red) w/Guard	Momentary Dual Pushbutton (Green "START" & Red "STOP")
BT-1A (1NO/1NC)	1	442	447	307	452	457	106	462	465	72
BT-2 (2NO)	2	443	448	308	453	458	107	463	466	73
BT-3 (2NC)	3	444	449	309	454	459	108	464	467	74
BT-4 (1NO)	4	445	450	310	455	460	109	N/A	468	N/A
BT-5 (1NC)	5	446	451	311	456	461	110	N/A	469	N/A

**Other pilot devices available – Consult Factory.**

# CONTROL STATION

EXPLOSIONPROOF  
Control Station

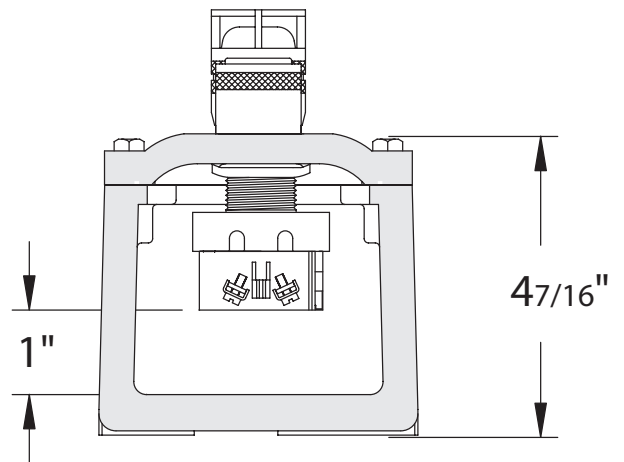
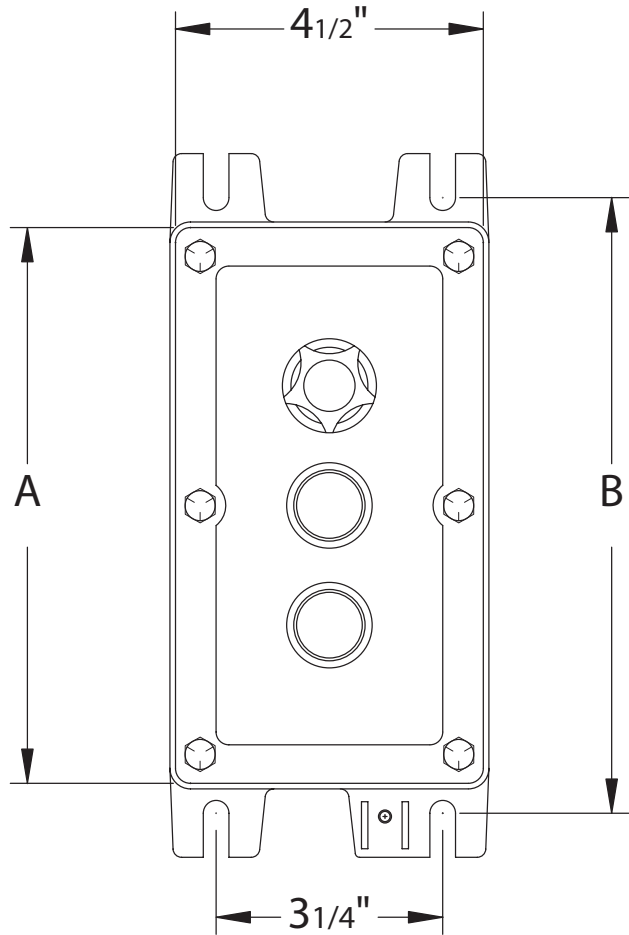
## Control Station

### DIMENSIONS

Enclosure	Nom. Inside Dimensions	Dimensions (in.)		Est. Weight (lbs.)	Std. Conduit* Size (in.)
		A	B		
X1	030303	4 1/2	5 1/2	5	3/4
X2	030603	7 1/16	8	7	3/4
X3	030703	8 1/8	9	8	3/4
X4	030903	10 1/16	11	10	1
X5	031103	12 1/16	13	11	1 1/4
X6	031303	14 1/16	15	12	1 1/4
X7	031503	16	17	13	1 1/4

Control Stations have conduit openings centered on top and bottom.

\*Consult factory for other conduit sizes.



# Legend Plates Standard Marking

**TABLE F2 - STANDARD MARKING**

PUSHBUTTON / PILOT LIGHTS			SELECTOR SWITCHES	
Blank	Slow	Reset	Run-Jog	Open-Off-Close
Start	Open	In	Hand-Auto	Fast-Off-Slow
Inch	Close	Out	Forward-Reverse	Run-Auto-Jog
Stop	Up	Left	Fast-Slow	Hand-Off-Auto
Run	Jog	Right	Open-Close	Forward-Off-Reverse
Forward	On	Low	Up-Down	1-Off-2
Reverse	Off	High	Off-On	Up-Off-Down
Fast	Back	Down		
		E-Stop		

Legend plates are anodized aluminum with engraved letters on black background.

Stop has red and start has green background.

Special engraved legend plates can be supplied.

## Contact Ratings

**MAX RATING: TYPE BT CONTACT BLOCKS**

		AC				DC			
		110	220	440	550	24/28	120	240	600
Volts									
Make & Emergency Interrupting Capacity	A	60.	30.	15.	12.	5.7	1.1	0.5	0.2
Normal Load Break	A	6.	3.	1.5	1.2	5.7	1.1	0.5	0.2
Continuous Current	A	10.	10.	10.	10.	5.	10.	10.	10.5