

XGC: Explosionproof Circular Windows

FEATURES

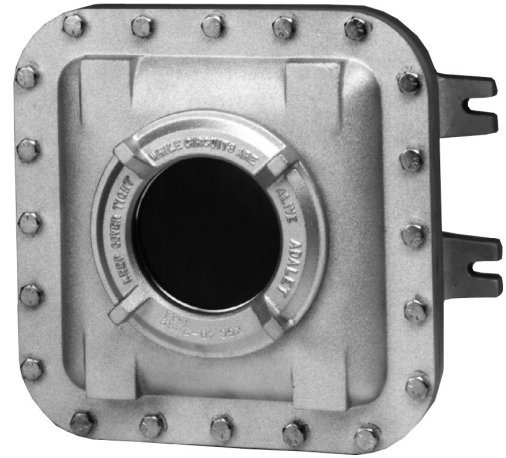
- 7 standard sizes available
- One-piece, NEMA 4 water-tight gasket
- Tumbblast window frame for uniform, natural, aluminum finish
- Impact-resistant, shatterproof glass that won't cloud or scratch
- Available factory-installed or as a kit for field installation

MATERIAL

- Window frames cast from proprietary 359 aluminum alloy – contains less than 3/10 of 1% copper (.003)
- Nitrile "O"-rings
- Tempered soda-lime glass

CERTIFICATIONS

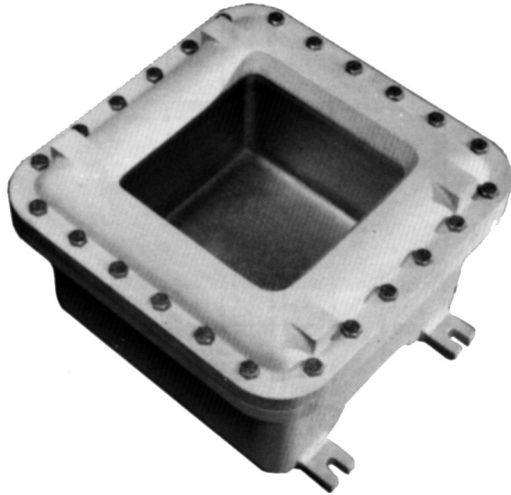
- Matches certification of Adalet enclosure in which it is installed



XGS WINDOWS

| Catalog Number | Viewing Dia. (in.) | Overall Diameter | Min.Enclosure Inside Width/Length | Thread Tap |
|----------------|--------------------|------------------|-----------------------------------|-------------------|
| XGC 10 N4 | 1 1/8 | 3 | 8 | 2 1/2-16 UN-2B |
| XGC 20 N4 | 1 15/16 | 4 1/8 | 9 | 3 5/8-12 UN-2B |
| XGC 30 N4 | 3 | 5 3/16 | 9 | 4 3/4 - 12 UN-2B |
| XGC 40 N4 | 4 | 6 3/8 | 9 | 5 1/2 - 12 UNS-2B |
| XGC 52 N4 | 5 1/4 | 7 7/8 | 10 | 7 1/8 - 12 UNS-2B |
| XGC 66 N4 | 6 11/16 | 10 3/8 | 16 | 9 1/8 - 12 UNS-2B |
| XGC 80 N4 | 8 | 12 1/2 | 18 | 10 7/8 - 8 UNS-2B |

XGW: Explosionproof Factory Installed Windows



FEATURES

- 10 standard sizes available
- Beveled edge for superior aesthetics
- Impact-resistant, shatterproof glass that won't cloud or scratch
- Factory-sealed

DESIGN OPTIONS

- Customizable to any viewing area ranging from 3" x 3" up to 13" x 13"

MATERIAL

- 304SS retaining plate
- Tempered soda-lime glass

CERTIFICATIONS

- Matches certification of Adalet enclosure in which it is installed

XGW WINDOWS

| Catalog Number | Viewing Area (in.) | Min. Enclosure Inside Length | Min. Enclosure Inside Width |
|----------------|--------------------|------------------------------|-----------------------------|
| XGW 0303 | 3 X 3 | 8 | 8 |
| XGW 0305 | 3 X 5 | 8 | 10 |
| XGW 0307 | 3 X 7 | 8 | 12 |
| XGW 0505 | 5 X 5 | 10 | 10 |
| XGW 0509 | 5 X 9 | 10 | 14 |
| XGW 0707 | 7 X 7 | 12 | 12 |
| XGW 0713 | 7 X 13 | 12 | 18 |
| XGW 0909 | 9 X 9 | 14 | 14 |
| XGW 1111 | 11 X 11 | 16 | 16 |
| XGW 1313 | 13 X 13 | 18 | 18 |